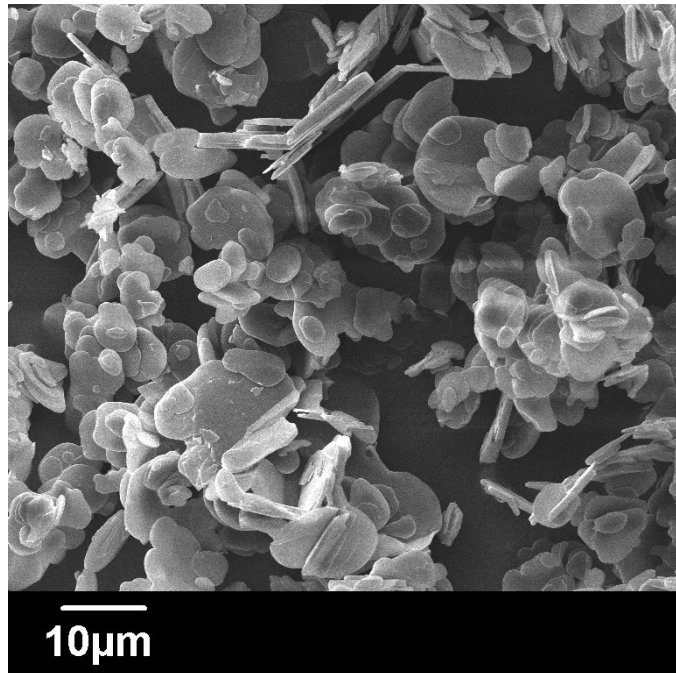


Boron Nitride Powder CARESS* BN12



Typical Analysis*:

BNmin.	99%
Oxygen tot.	0,6%
B₂O₃ sol.	0,03%
C	0,015%
Ca	0,015%
Si	0,025%
Al	0,003%
Fe	0,002%
As	0,0002%
Pb	0,0002%
Hg	0,0005%
BET	2m²/g
Tap Density	0,5g/cm³
Mean Particle Size	12µm
D97	50µm

*Values represent typical data and will vary within ranges established for a particular grade.

Bent Tree Industries Europe GmbH
Pruehler Muehle 1
91483 Oberscheinfeld
Tel: +49 9167 1303
E-Mail: RDamasch@CARESSBN.com
www.CARESSBN.com

*Brand Name CARESS under registration