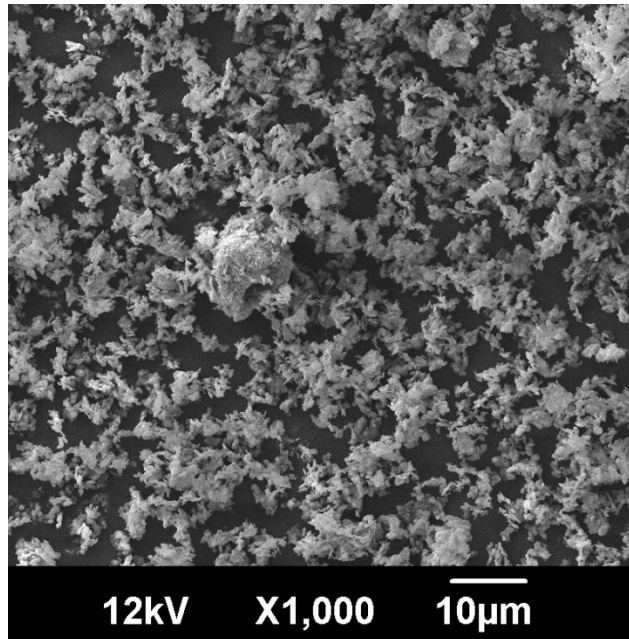


Data Sheet

Boron Nitride Powder CARESS* BN005



Typical Analysis*:

BNmin.	98,5%
Oxygen tot.	1,2%
B₂O₃ sol.	0,05%
C	0,02%
Ca	0,005%
Si	0,025%
Al	0,003%
Fe	0,002%
As	0,0002%
Pb	0,0002%
Hg	0,0005%
BET	17m²/g
Tap Density	0,3g/cm³
Mean Particle Size	3µm

*Values represent typical data and will vary within ranges established for a particular grade.